

Intraoperative Registration of Pathology for Adjuvant Postoperative Radiotherapy

Kareem Fakhoury, **Matthew Hauser**, Steven Lin
Project #4

Kareem Fakhoury
Matthew Hauser
Steven Lin



CIS Confidential

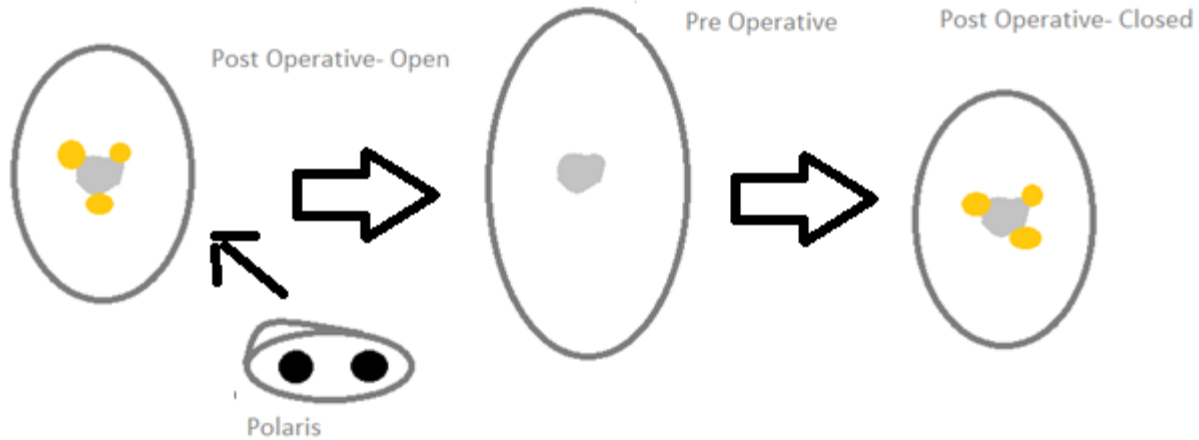
Mentors

- Dr. Harry Quon, M.D.
 - Department of Radiation Oncology
- Dr. Junghoon Lee, Ph.D
 - Department of Radiation Oncology
- Dr. Jeremy Richmon, M.D.
 - Department of Head and Neck Surgery Robotic Program

Overview

- Pre-Operative CT Scan
- Remove a Piece of Pig Tongue
- Insert Markers on Tongue
- Register Polaris Points of Markers
- CT Scan
- Close Surgical Wound
- CT Scan

Overview



Kareem Fakhoury
Matthew Hauser
Steven Lin



CIS Confidential

Large Deformation Three-Dimensional Image Registration in Image-Guided Radiation Therapy

Journal of Physics in Medicine and Biology

Mark Foskey, Brad Davis, Lav Goyal, Sha Chang, Ed Chaney, Nathalie Strehl, Sandrine Tomei, Julian Rosenman, and Sarang Joshi

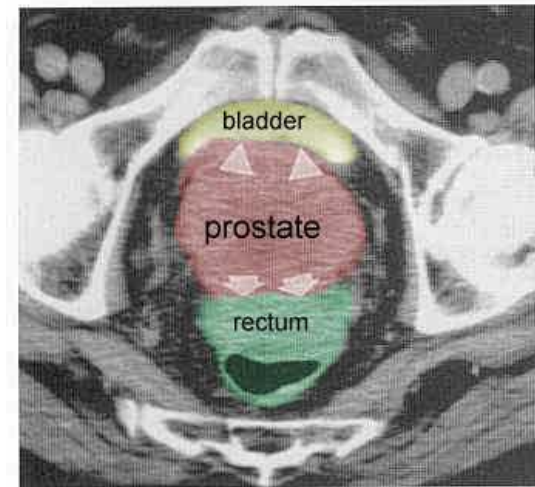
Kareem Fakhoury
Matthew Hauser
Steven Lin



CIS Confidential

Abstract

- CT Image of the Prostate
- Deformable Registration Algorithm between Planning Scan and Treatment Scan



aboutcancer.com

Introduction

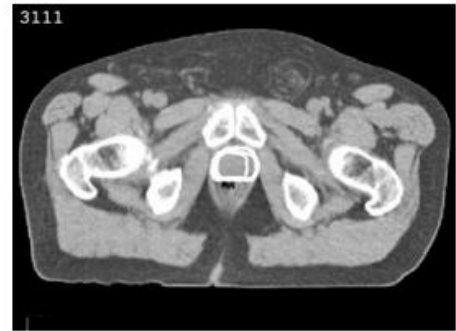
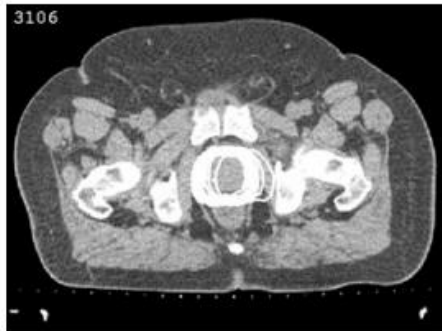
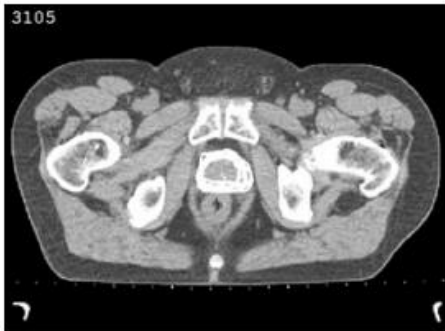
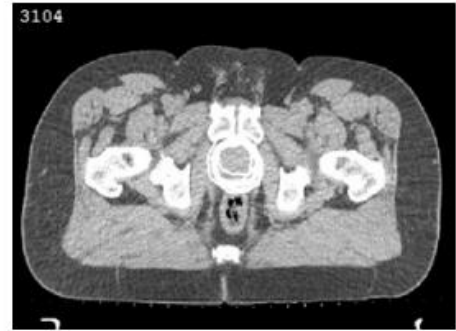
- Radiotherapy can be delivered in high doses to a localized region
- Critical any organ movement be monitored
- Traditionally, organ movement is assumed to be uniform

Introduction

- Organ movement is not uniform as organs are not rigid
- Changes in Bladder Size
- Gas in the Rectum

Introduction

- Organ Movement can be monitored by the difference in two CT scans

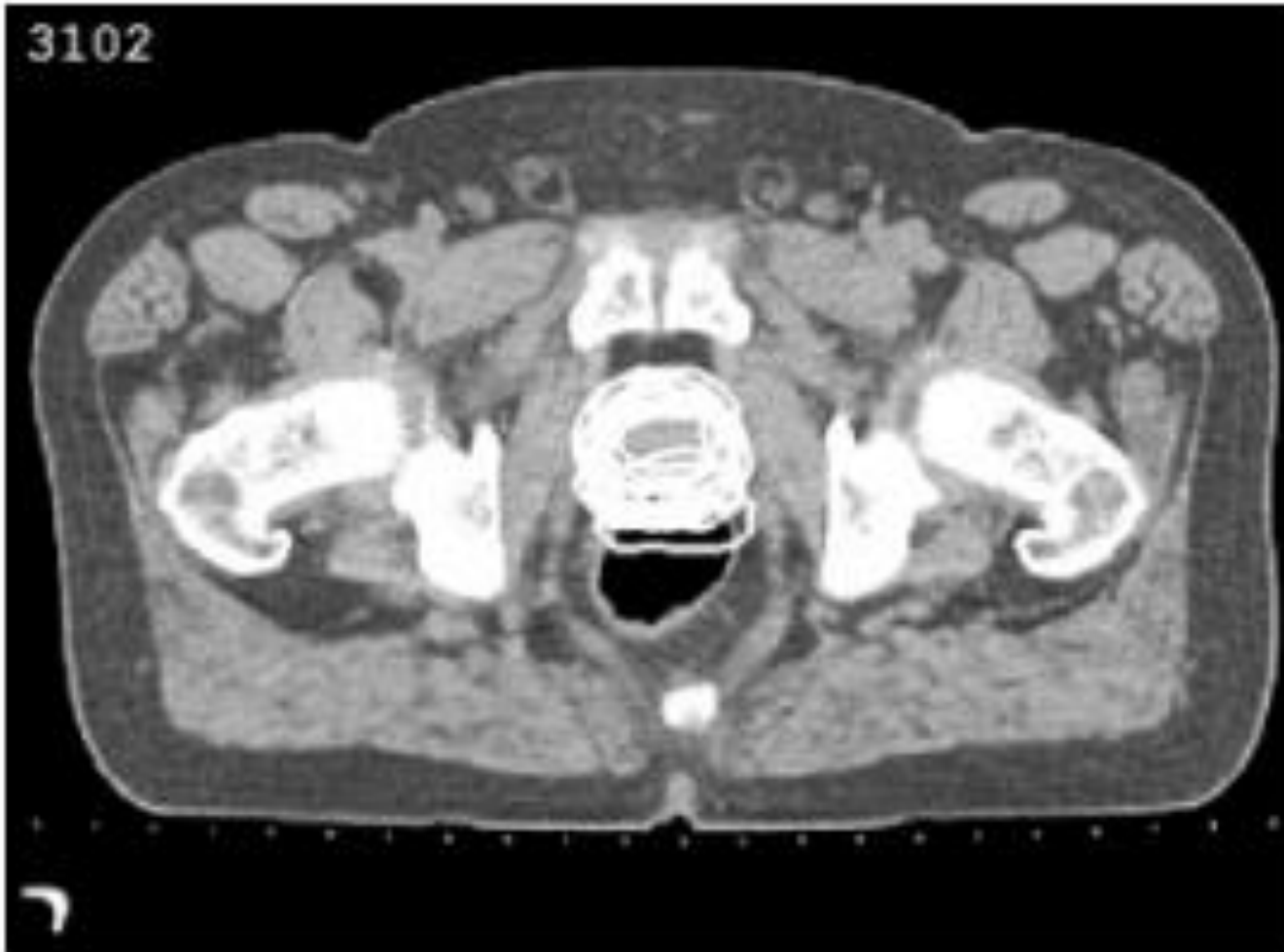


Joshi et al.

Kareem Fakhoury
Matthew Hauser
Steven Lin



CIS Confidential



Joshi et al.

Kareem Fakhoury
Matthew Hauser
Steven Lin

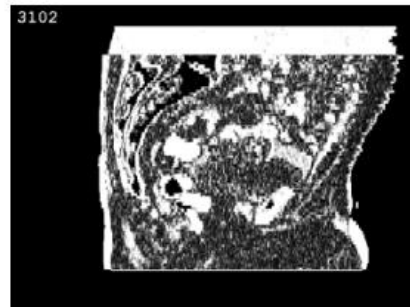
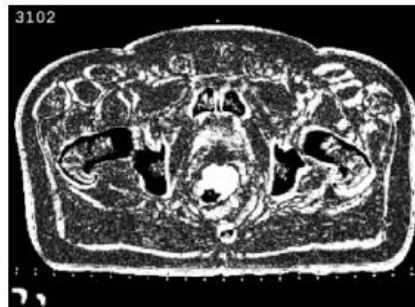
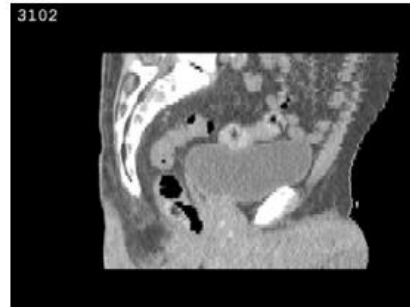
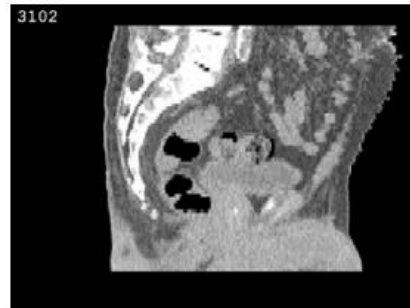
ciis



CIS Confidential

Introduction

- Tongue is not Rigid
- Removal of Part of the Tongue will remove one-to-one point correspondences



Joshi et al.

Kareem Fakhoury
Matthew Hauser
Steven Lin



CIS Confidential

Deformable Image Registration

- *Minimize Energy Term*
- $E(h) = \int_V (I_p(x) - I_T(h(x)))^2 dx$
- I_p is the intensity of a voxel in the planning image
- I_T is the intensity of a voxel in the treatment image
- $h: V \rightarrow V$
- *maps a voxel in the planning image to the treatment image*

Rigid Motion

- *In the case of Rigid Motion:*
- $h(x) = x + \tau$
- So the energy term reduces to:
- $E(\tau) = \int_V \left(I_p(x) - I_T(x + \tau) \right)^2 dx$

Rigid Motion

- Using a method developed in :
- Structural and radiometric asymmetry in brain images (2003)
- Med. Imaging Analysis
- Joshi S, Lorenzen P, Gerig G and Bullitt E
- $E(\tau) = \int_V (I_p(x) - I_T(x + \tau))^2 dx$

Rigid Motion

- Let $\tau_{k+1} = \tau_k + \Delta\tau_k$ and $x' = x + \tau_k$
- $I_T(x + \tau_{k+1}) = I_T(x' + \Delta\tau_k)$
- First Order Taylor Series About x'
- $E(\tau_{k+1}) \approx \int_V (I_P(x) - I_T(x') + \nabla I_T(x') \cdot \Delta\tau_k)^2 dx$
- $\Delta\tau_k$ that minimizes $E(\tau_{k+1})$
- $\Delta\tau_k =$
$$\left(\int_V \nabla I_T(x') \nabla I_T(x')^T dx \right)^{-1} \int_V (I_P(x) - I_T(x')) \nabla I_T(x') dx$$

Rigid Motion

- Now suppose h depends on more than just τ
- A *parameter vector* a , and x
- $h = h_a(x)$
- $\Delta a_k =$
$$\left(\int_V \nabla_a I_T(h_a(x)) \nabla_a I_T(h_a(x))^T dx \right)^{-1} \int_V (I_p(x) - I_T(h_a(x))) \nabla_a I_T(h_a(x)) dx$$

Rigid Motion

- Affine: Translation, Rotation, Scaling and Shearing

- In the case where $h(x) = Ax + \tau$

- $a = [A_{11} \ A_{12} \ \dots \ A_{32} \ A_{33} \ \tau_1 \ \tau_2 \ \tau_3]^T$

- $X =$

$$\begin{bmatrix} x_1 & x_2 & x_3 & 0 & 0 & 0 & 0 & 0 & 0 & 1 & 0 & 0 \\ 0 & 0 & 0 & x_1 & x_2 & x_3 & 0 & 0 & 0 & 0 & 1 & 0 \\ 0 & 0 & 0 & 0 & 0 & 0 & x_1 & x_2 & x_3 & 0 & 0 & 1 \end{bmatrix}$$

- $Ax + \tau = Xa$

- $\nabla_a I_T(h_a(x)) = \left(\nabla I_T \Big|_{h_a(x)} \right)^T X$

Deformation

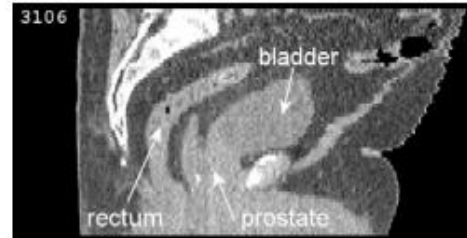
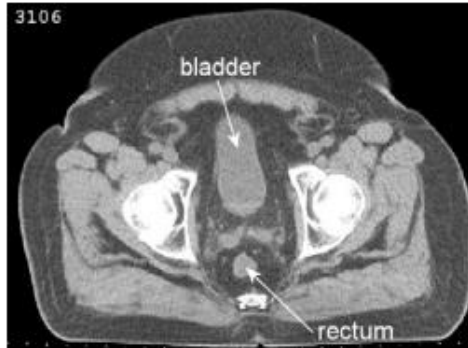
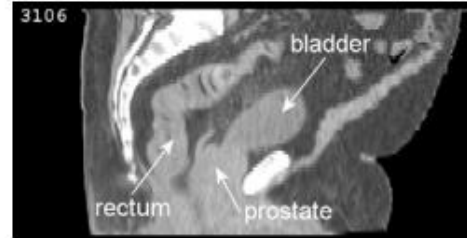
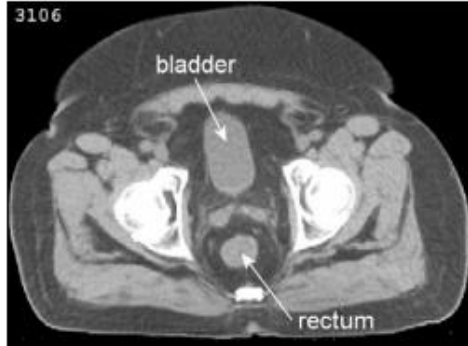
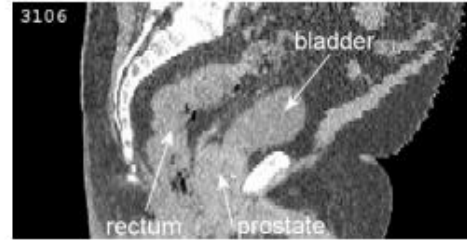
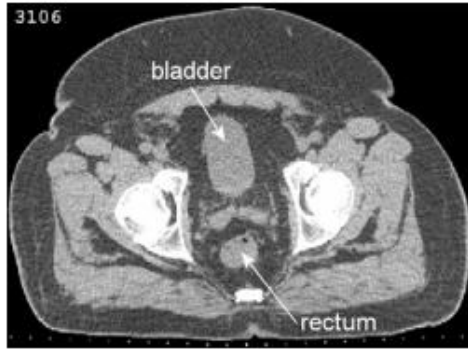
- $E(h) = \int_V (I_p(x) - I_T(h(x, t)))^2 dx + E_{reg}(h)$
- $h(x, t) = x + \int_0^t v(h(x, s), s) ds$
- $E_{reg}(h) = \int_{V,t} \left\| L_{reg} v(x, t) \right\|^2 dx dt$

Deformation

- $Lv = \alpha \nabla^2 v + \beta \nabla(\nabla \cdot v) + \gamma v$
- Motivated by Navier-Stokes

Deformation

- Optimized using methods developed in
- Miller et al (2002)
- Beg et al (2005)



Joshi et al.

Kareem Fakhoury
Matthew Hauser
Steven Lin



CIS Confidential

Bowel Gas

- Bowel Gas will appear in some CT scans causing deformation in the image
- Resolved by 'Deflation'
- Threshold image
- Image force is given by the gradient of intensity, thus causing bubbles to shrink towards the center.
- Not Tissue Motion Because it Disappears

Bowel Gas

- Similar to Tissue removal?



Photo Credit: Dr. Junghoon Lee

Kareem Fakhoury
Matthew Hauser
Steven Lin

ciis



CIS Confidential

Composite Transformation

- Rigid Transformation
- Deflation
- Deformable Registration

Segmentation

- If original planning image is segmented, subsequent treatment images can automatically be segmented using the registration technique

Results

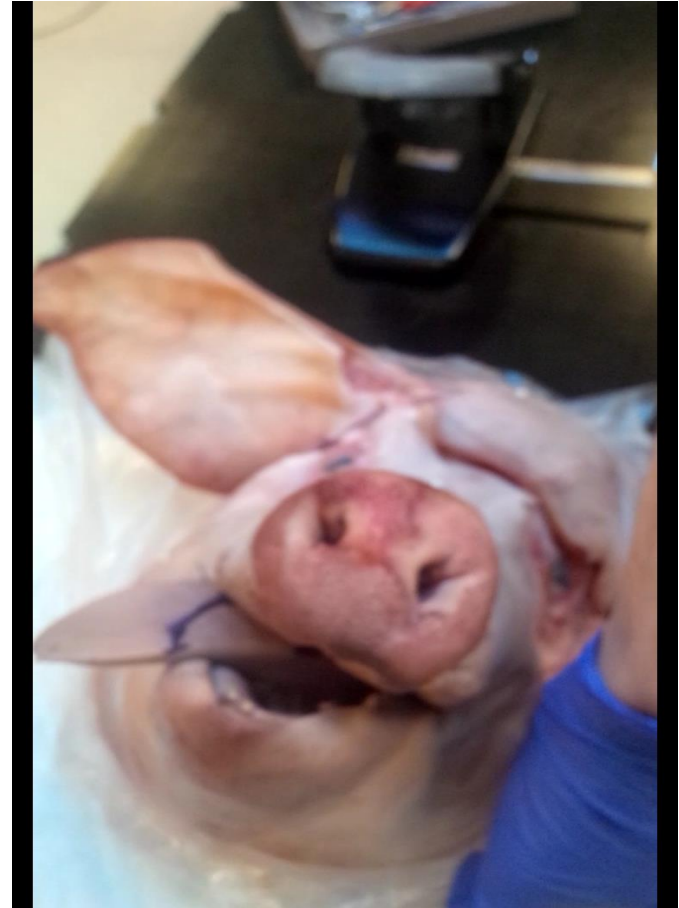
- Due to inherent differences that exist between human raters, the authors compared the difference between a manual segmentation and the automatic segmentation and between to manual segmentations
- They found there was no significant difference in the two variations

Analysis

- Pelvic Organ Motion vs Tongue Motion

Analysis

- Tongue Mass change vs change in gas deformation

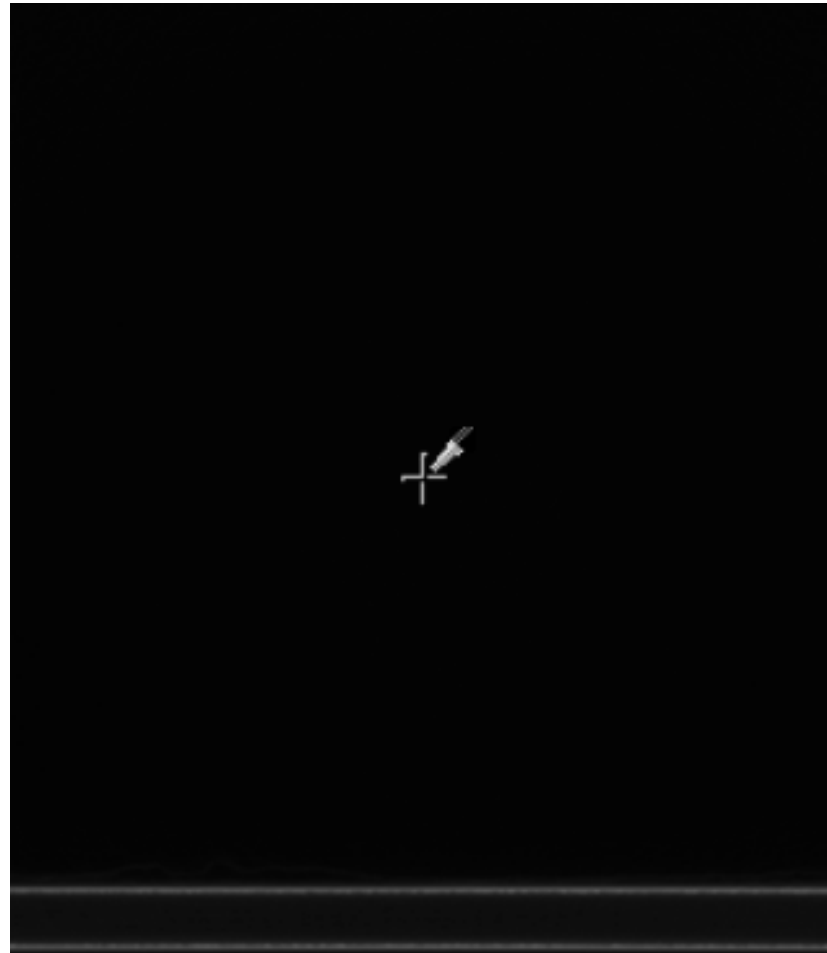


Criticism

- $E(h) = \int_V (I_p(x) - I_T(h(x)))^2 dx$
- Why not

$$E(h) = \int_V (I_p(x) - cI_T(h(x)))^2 dx$$

Criticism



Kareem Fakhoury
Matthew Hauser
Steven Lin

ciis


JOHNS HOPKINS
MEDICINE

CIS Confidential

Thank you!

- Beg M F, Miller M I, Trouve A and Younes L 2005. Computing large deformation metric mappings via geodesic flows of diffeomorphisms *Int. J. Comput. Vis.* 61 139–57
- M. Foskey, B. Davis, and L. Goyal et al., “Large deformation three-dimensional image registration in image-guided radiation therapy,” *Physics in Medicine and Biology*, vol. 50 pp. 5869-5892, 2005.
- Joshi S, Lorenzen P, Gerig G and Bullitt E 2003 Structural and radiometric asymmetry in brain images *Med. ImageAnal.* 7 155–70
- Miller M I, Trouve A and Younes L 2002 On the metrics and euler-lagrange equations of computational anatomy *Annu. Rev. Biomed. Eng.* 4 375–405