

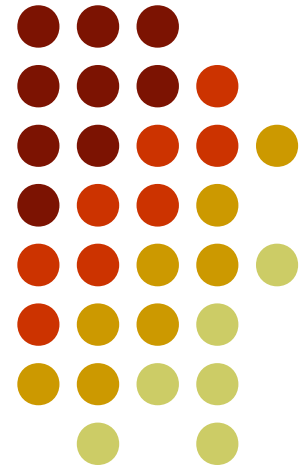


Sonix RP

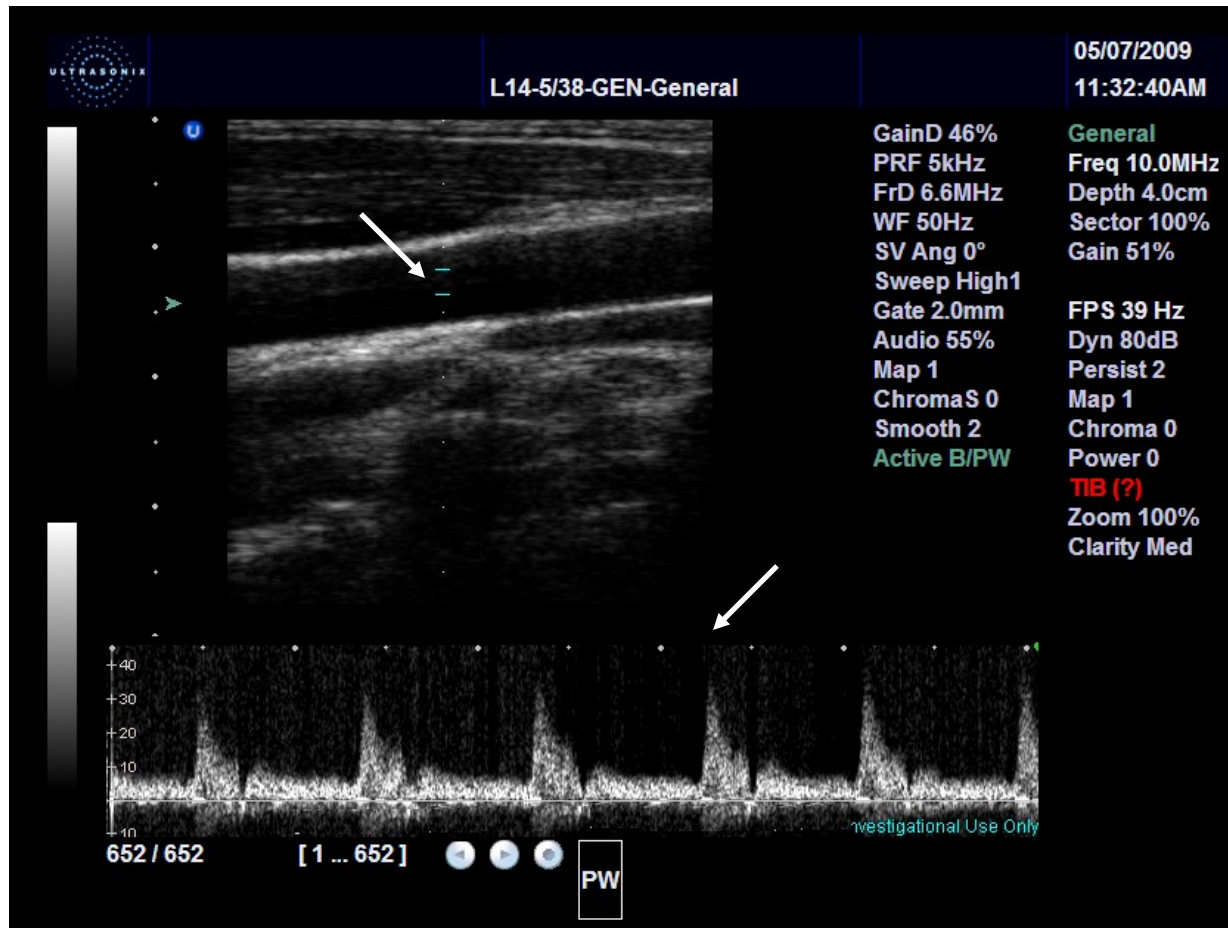


Pulsed Wave Doppler

Reza Zahiri Azar
Ultrasonix Medical Corp
May 2009



Pulsed Wave Doppler Imaging Mode





Pulse Sequencing

- The echo signals from the gate are acquired at a predefined pulse repetition frequency (PRF).
- These echo signals are then used to measure the component of the motion along the direction of beam propagation.

Processing



1. The acquired echo signals go through a demodulation to generate in-phase and quadrature components (I/Q).
2. These I/Q signals are then go through a high pass filter (wall filter) to remove the strong slow motions.
3. These wall filtered I/Q signals are then used to generate the spectrum.

Flow Chart

