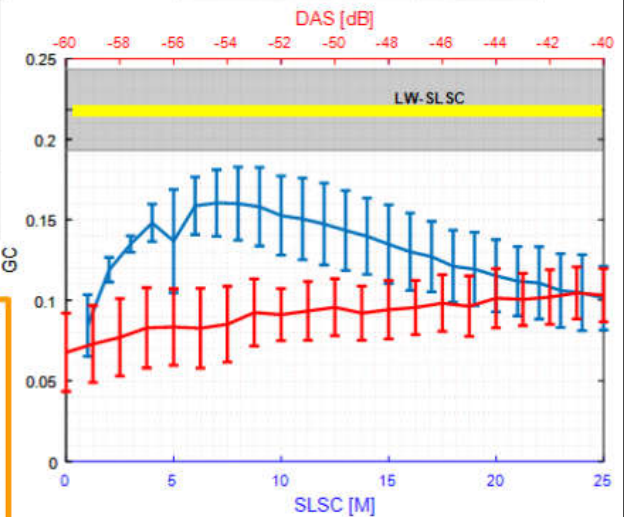
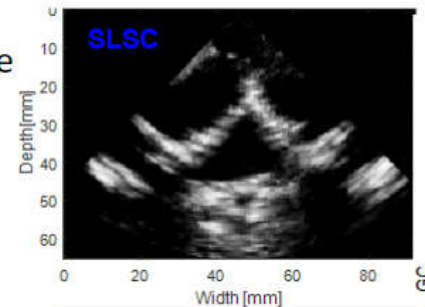
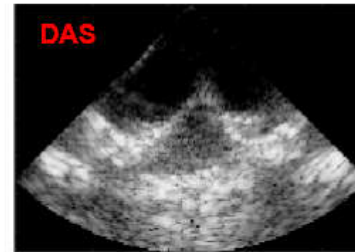


Enhancement of US-CT registration accuracy for spinal surgery



- **Motivation:** Enhancing bone boundary of the vertebra in US images could improve the registration accuracy of US-CT data
- **Methods:**
 - Created locally-weighted SLSC (LW-SLSC)
 - LW-SLSC uses minimization of total variance regularized over a moving kernel
 - Quantified CT / US similarity with gradient correlation metric
- **Results:** Similar performance registration between DAS, SLSC and LW-SLSC. SLSC and LW-SLSC features better contrast at bone edges.



Member: Eduardo Gonzalez

Mentor: Muyinatu A. Lediju Bell

Group ID: 20