

3D Reconstruction of Infants' Cranial Shape using Mobile Devices



Group 15 (Breakout Room 4): Tara Tang, David Shi
Mentors: Can Kocabalkanli, Dr. Özgür Güler, Dr. Reza Seifabadi

Goals:

- To reconstruct an accurate 3D model of a baby's head from depth maps

Significance:

- To allow pediatricians to identify skull deformities with much more accuracy, efficiency, and ease
- To prevent expensive open surgery, helmet and physical therapy

Results:

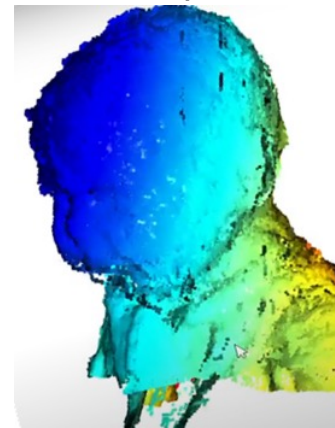
- Software pipeline to generate 3D reconstruction of baby's cranial shape
- Robust against minimal motion



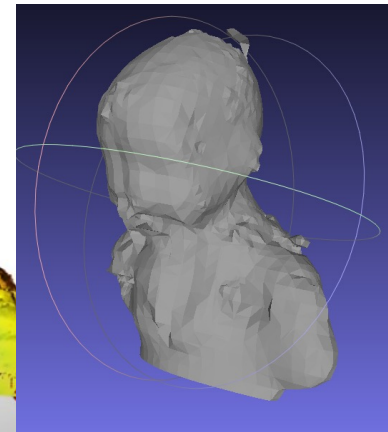
Depth



RGB



3D Reconstruction



Mesh