

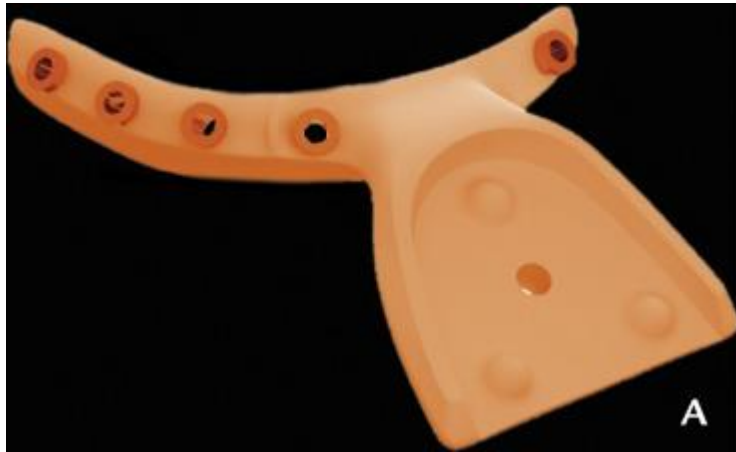
CIS2 Group 15 Updates

03/08/2022

OR Observations

- Workflow works well for a robot
 - Segmentations, surface models, and splints are already generated as part of the workflow
- Would be good to acquire a reciprocating saw
- Does abrupt movements from the saw occur?
 - Cooperative robot could help prevent this along with hand tremors
- Anterior cortical bone is cut, not cutting all the way through the mandible. Mandible is then fractured with a wedge and mallet
 - Cooperative robot would allow the cut to be made all the way through, better controlling the cut shape
- Robot will need to be able to compensate for small mandible movements
- Should the phantom have tongue and other tissue to obscure the medial side of the mandible?

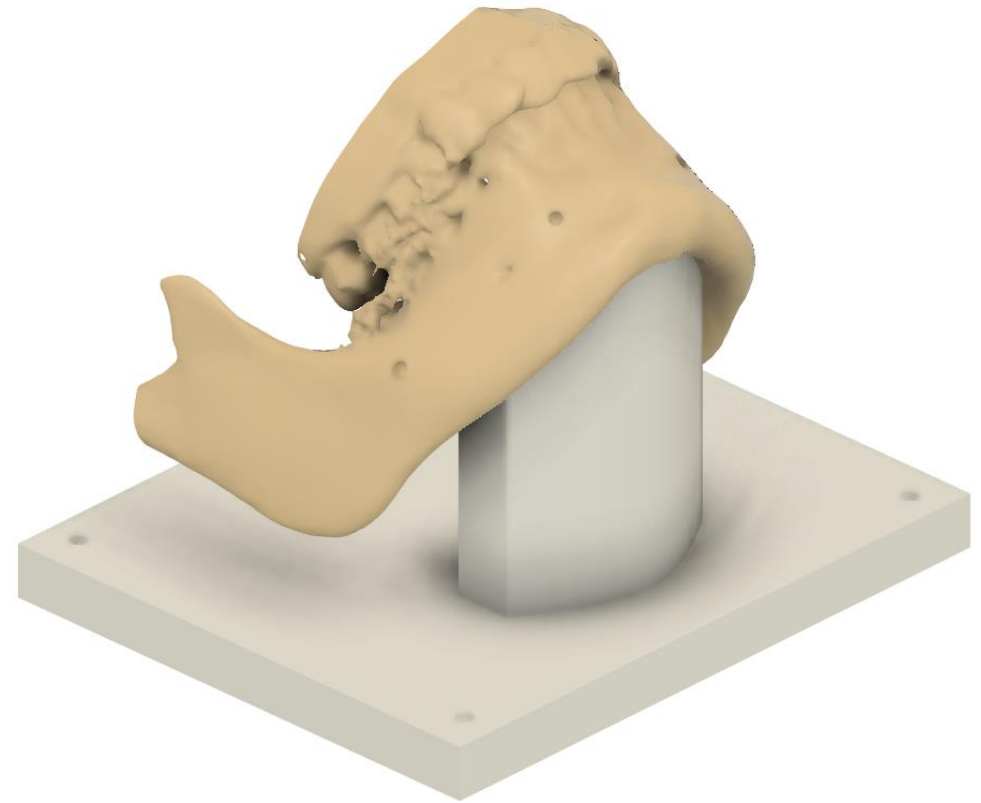
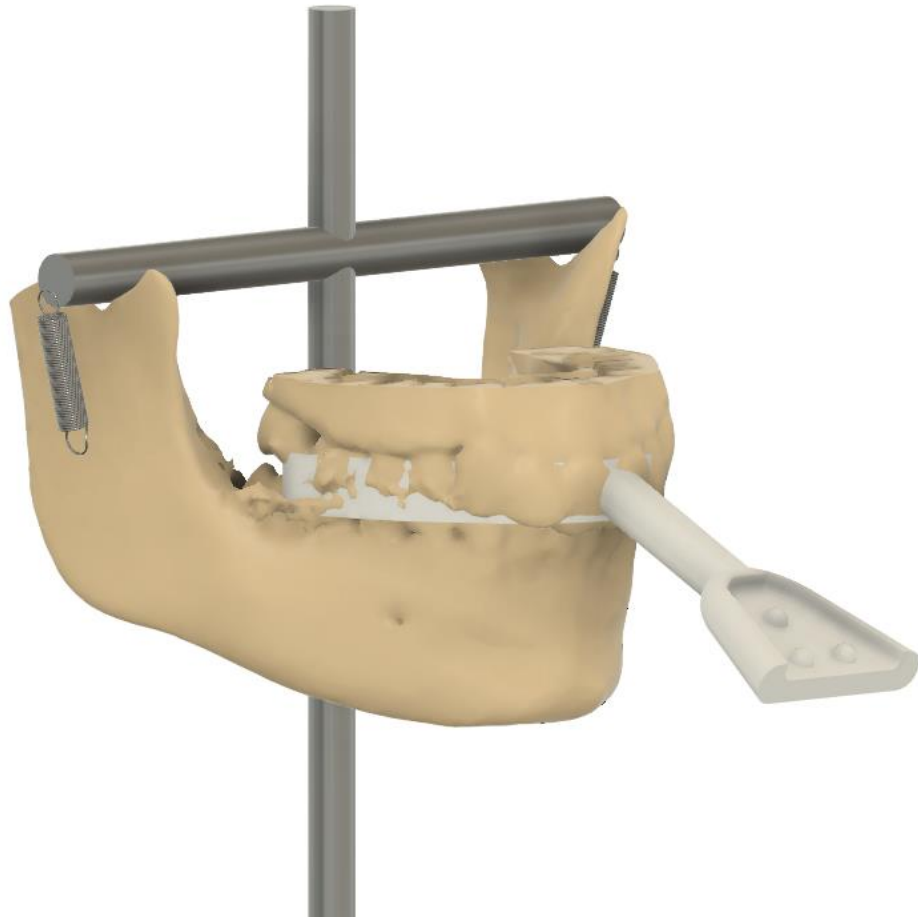
Mounting/Registration For Phantom



YOMI Dental Implant Robot



Mounting/Registration For Phantom

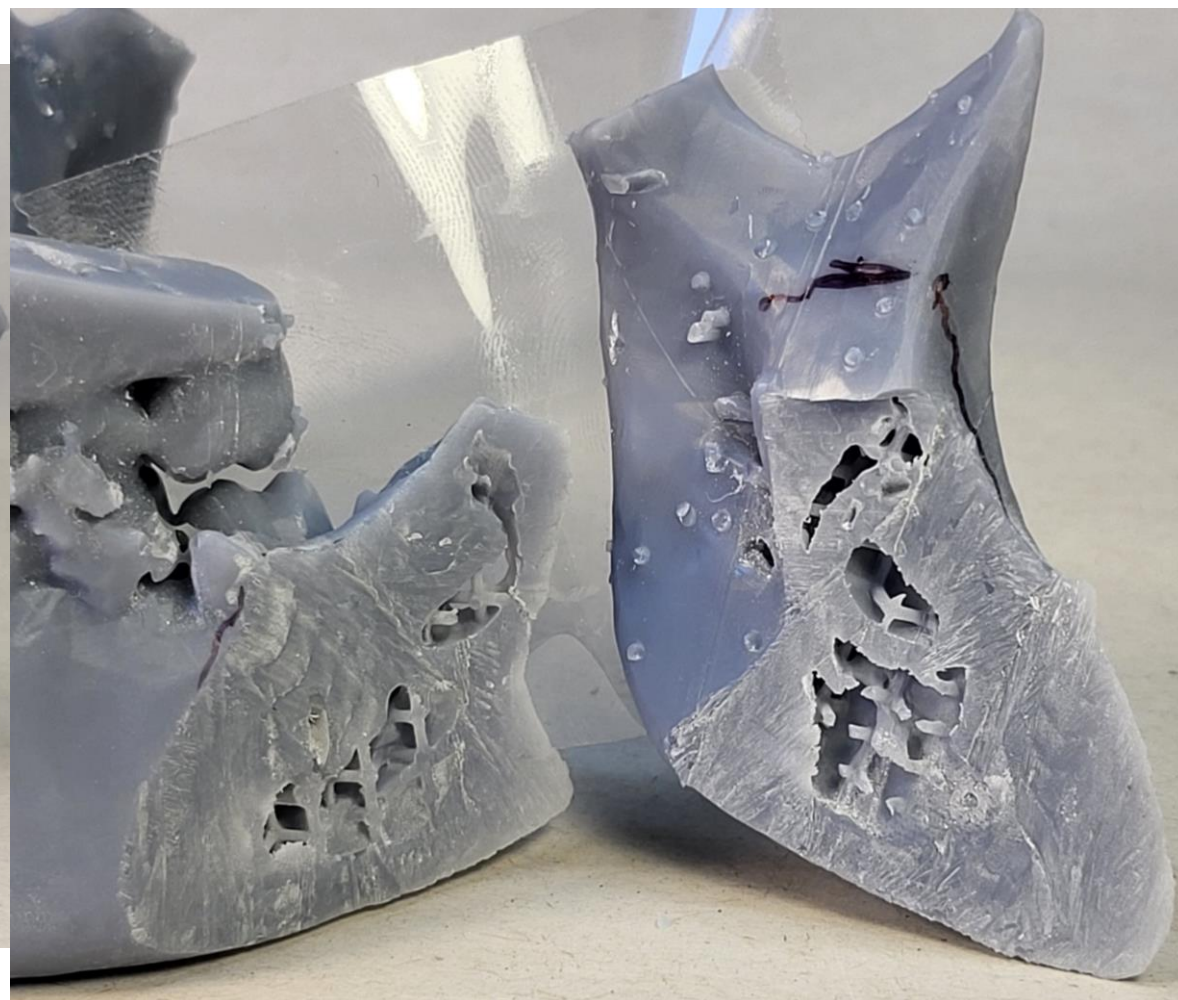


Tracking on base or on mandible

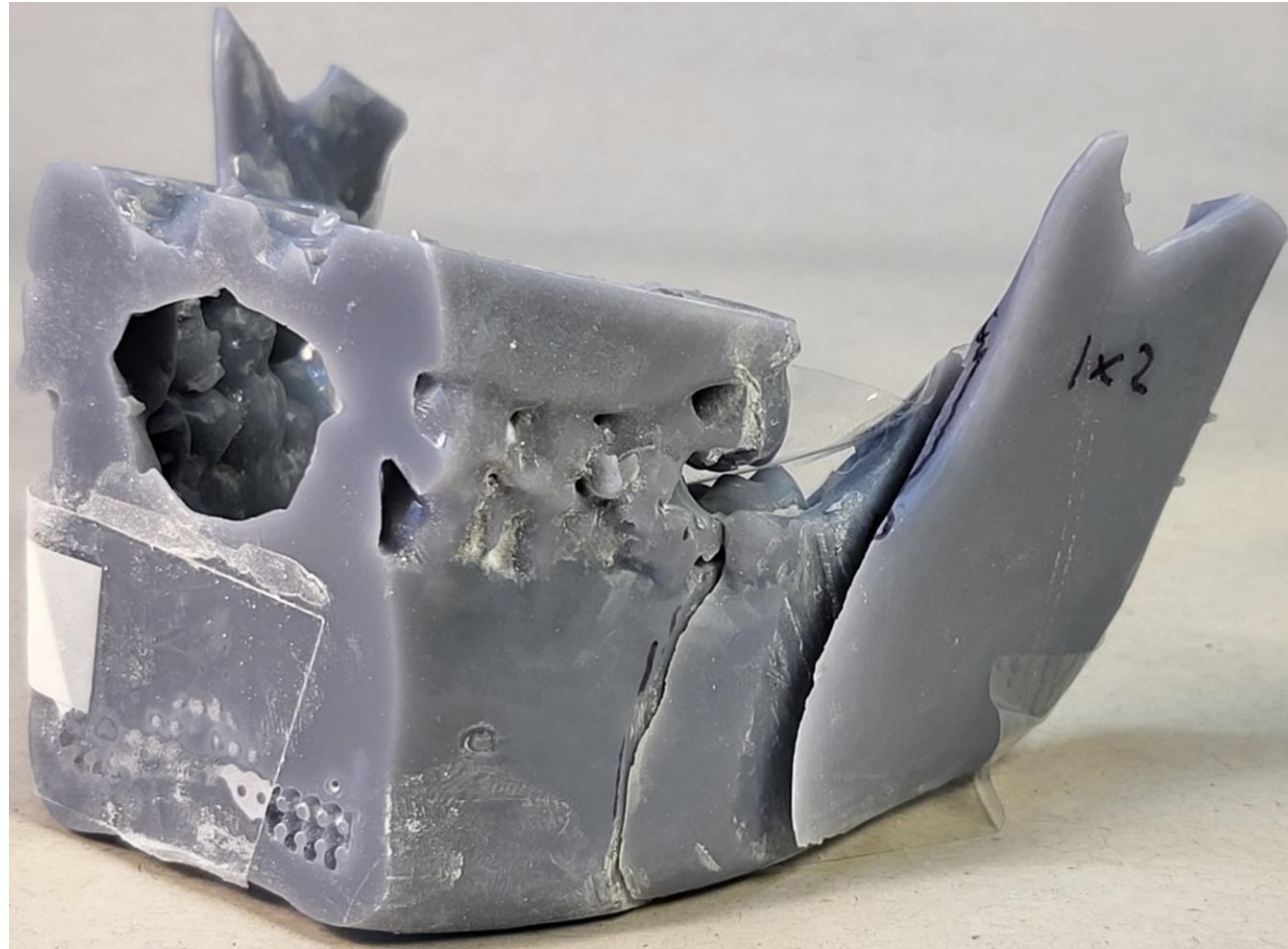
Printed Model No Lattice



Printed Model 1x3mm Lattice



Printed Model 1x2mm Lattice



Printed Model 1x2mm Lattice

