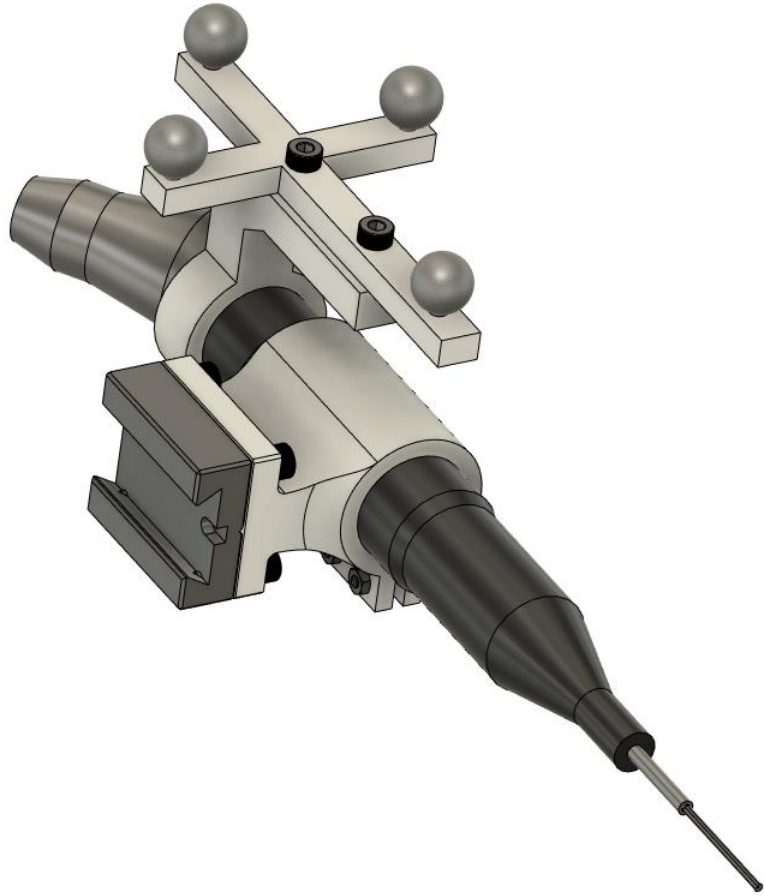


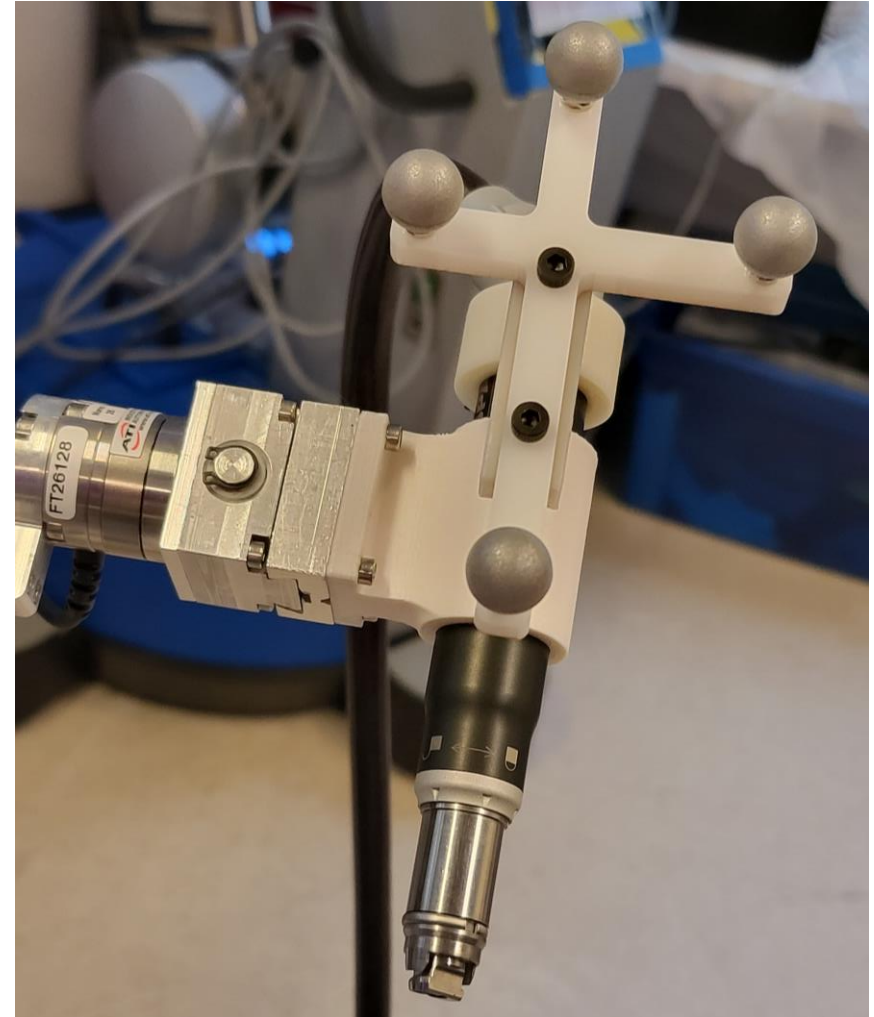
# CIS2 Group 15 Updates

03/15/2022

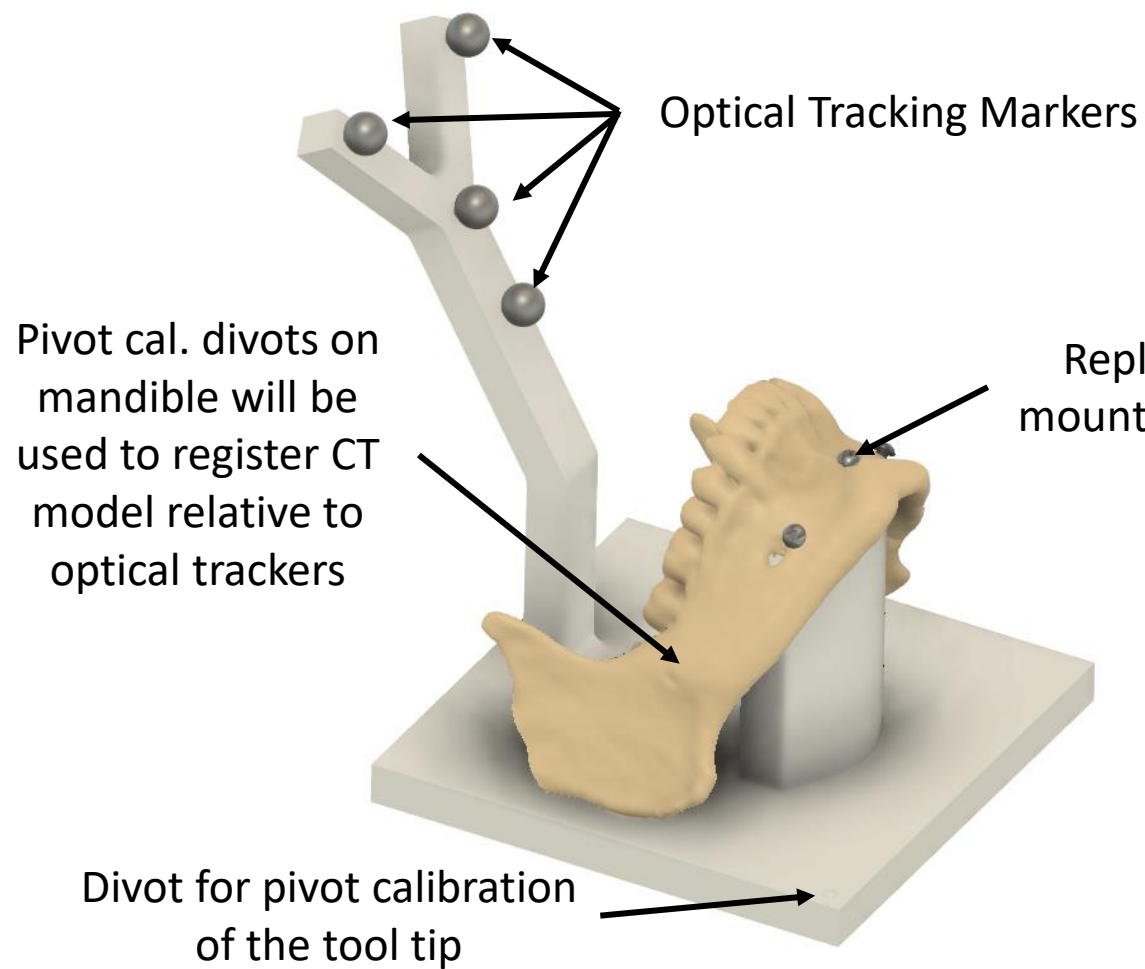
# Adaptor made for Anspach and Galen



Optical tracking markers added by  
Hongchao Shu and Ruixing Liang



# Mounting/Registration For Phantom

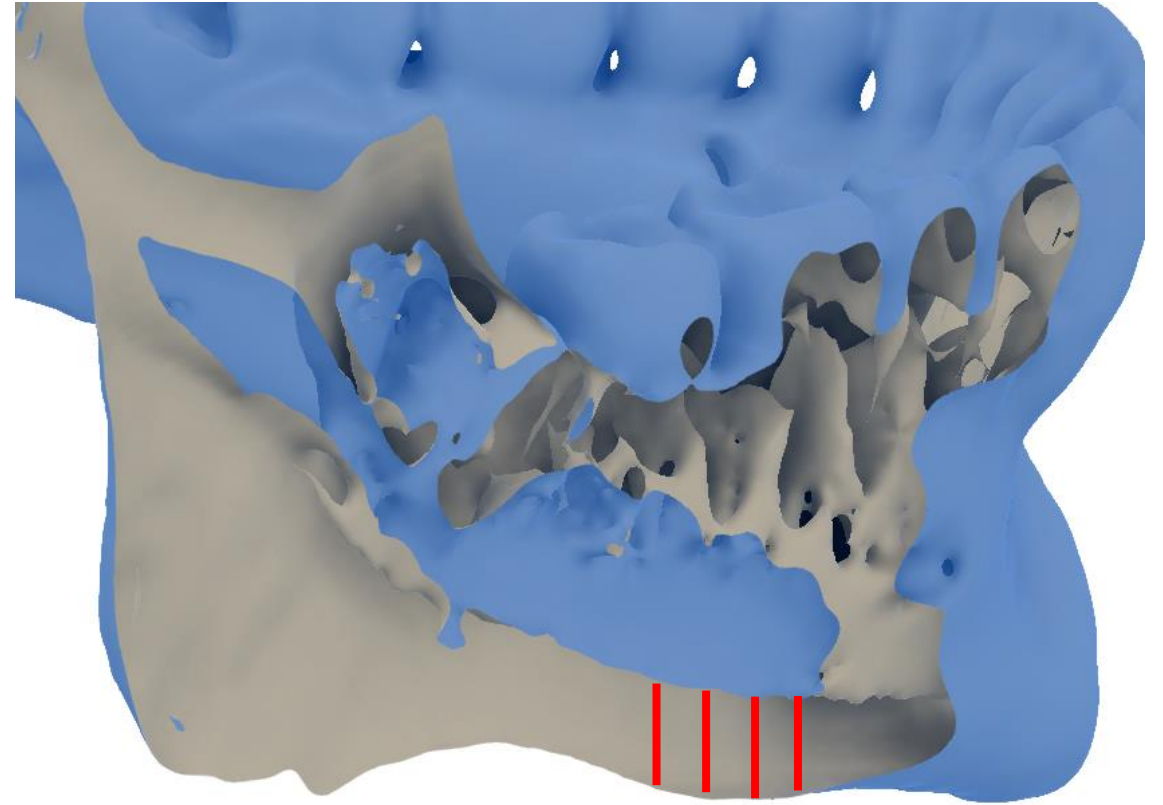
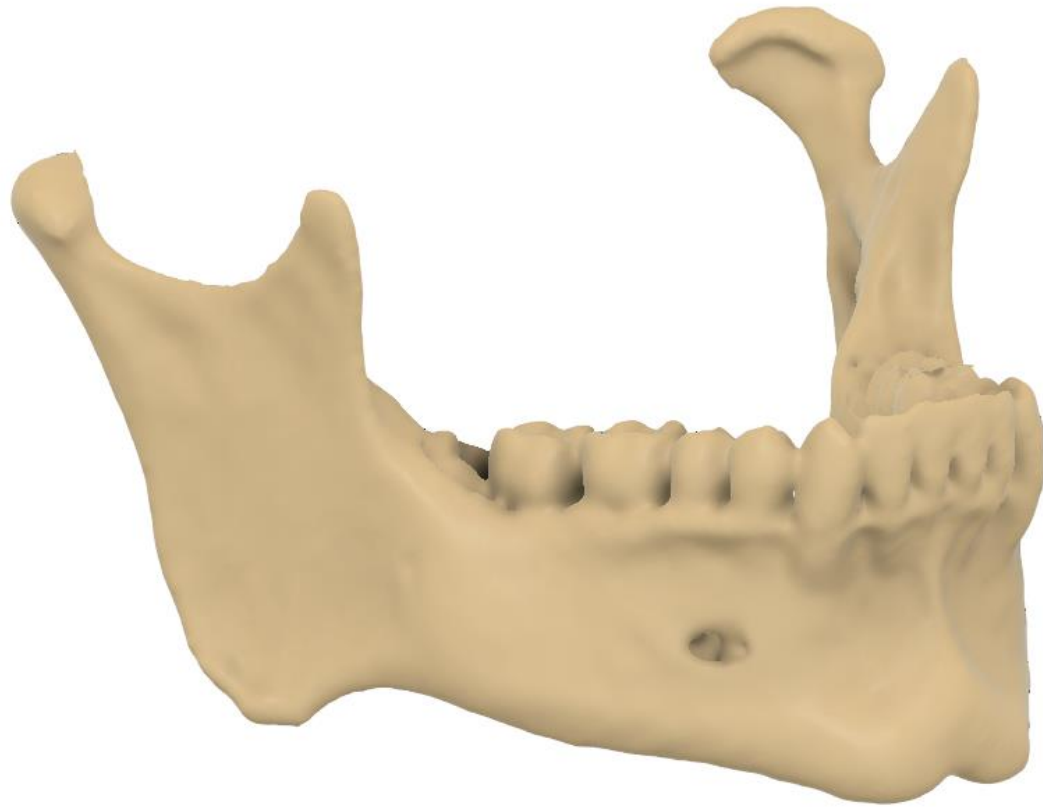


# Mounting/Registration For Phantom



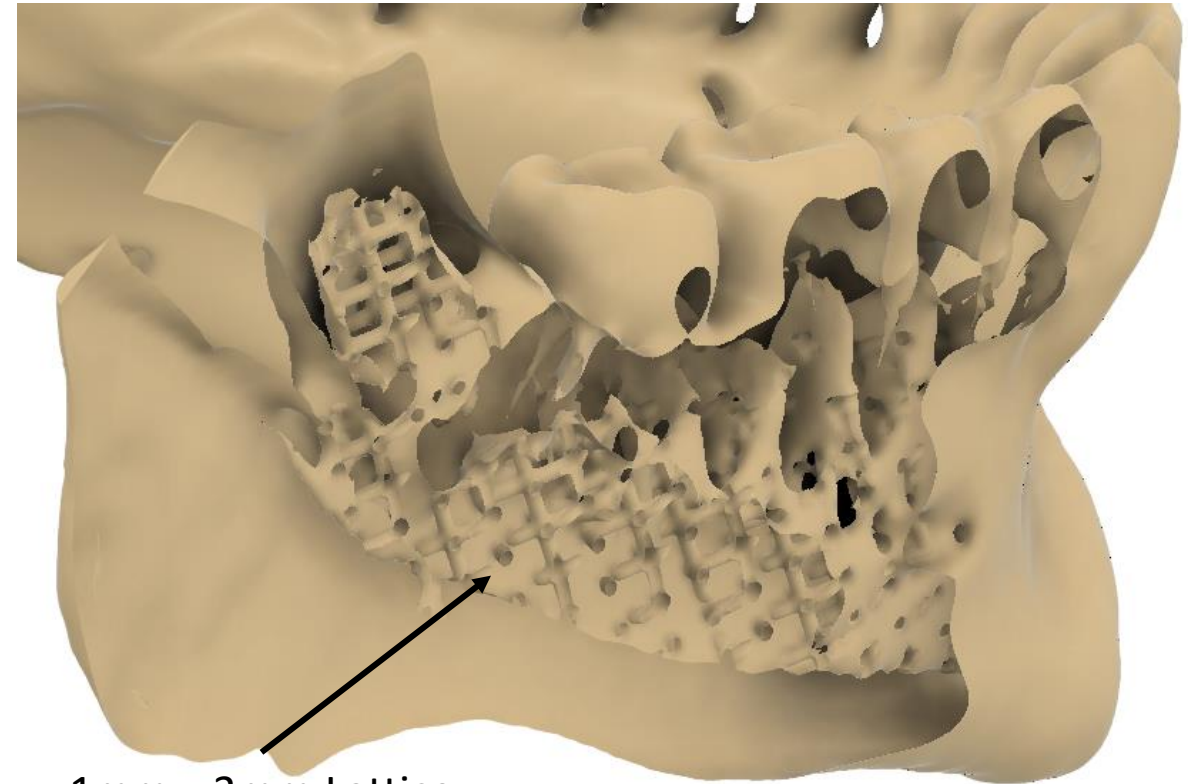
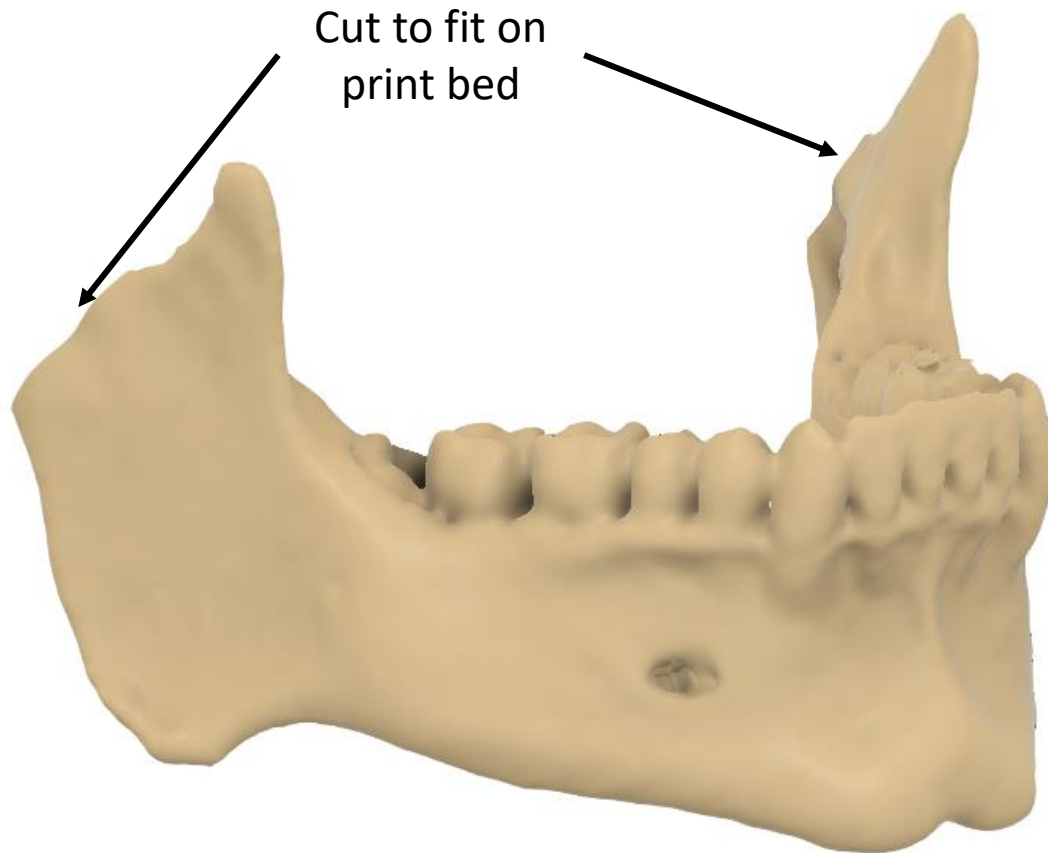
Cavity in mandible for  
secure fit to mount

# New NMDID Mandible Model



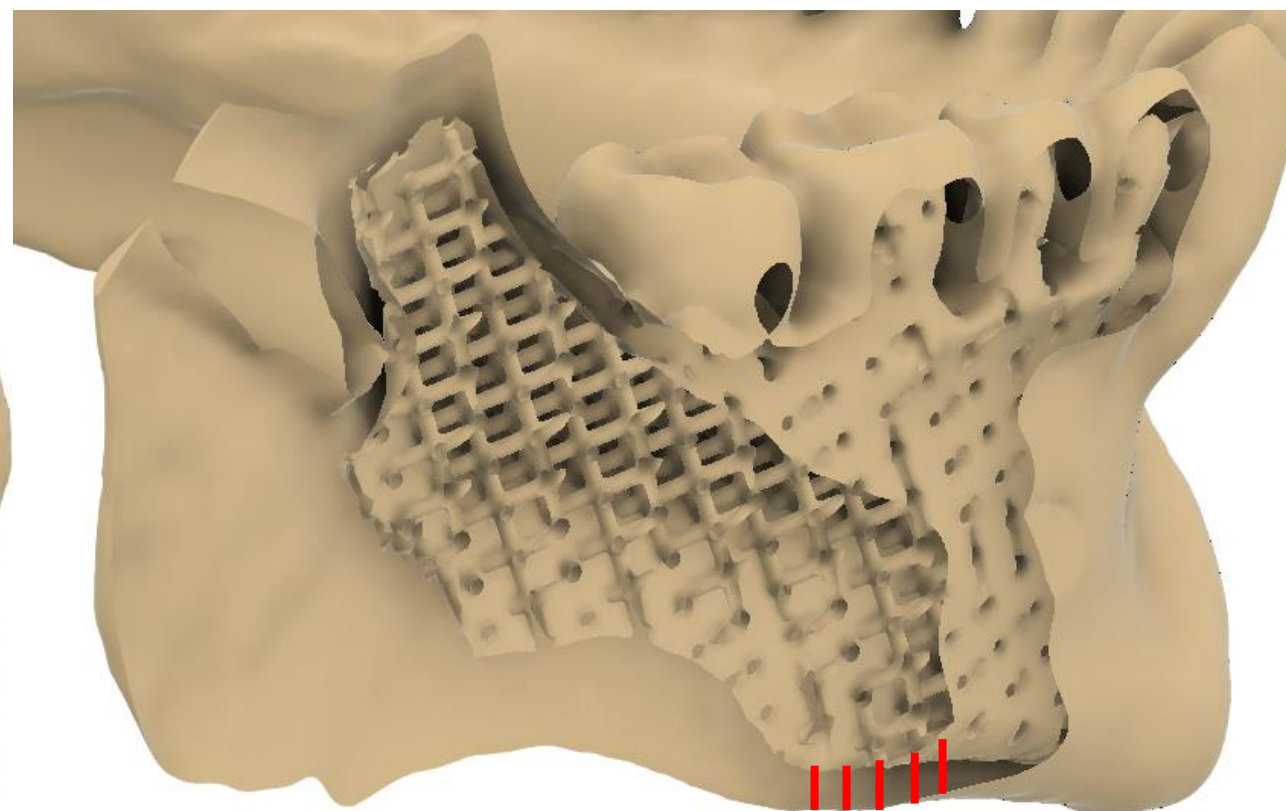
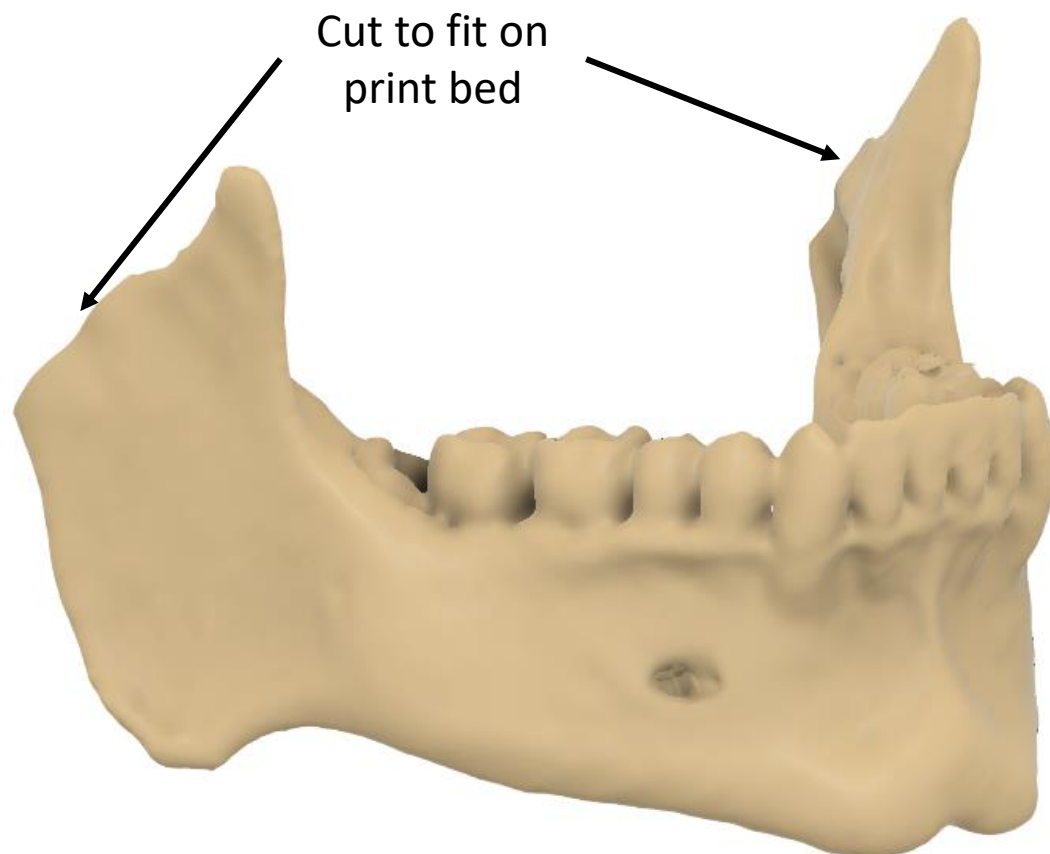
Cortical bone may  
still be too thick

# New NMDID Mandible Model – With Lattice



1mm x 3mm Lattice  
infill of empty cavities

# Model with “Artificial” 1mm Cortical Bone



1mm Thick cortical bone

# Anspach Drill Bit

**REF S-1R-G1** QTY: 1

EN 1.4 mm x 12.8 mm Fluted Router.  
DE Fräser, gerillt, Ø 1,4 x 12,8 mm.  
ES Router acanalado, Ø 1.4 mm x 12.8 mm.  
FR Couteau cannelé, Ø 1,4 mm x 12,8 mm.  
IT Fresatrice scanalata, Ø 1,4 mm x 12,8 mm.  
PT Fresa estriada, Ø 1,4 mm x 12,8 mm.  
CS Drážkovaný vyhlubovací, Ø 1,4 x 12,8 mm

QD8, QD8-G1, QD8-S, QD8-S-G1, SHORT, SHORT-G1  
**LOT R363147719** Use by 2026-08-28  
Pat. [www.depuysynthes.com/patentmarking](http://www.depuysynthes.com/patentmarking)

**ANSPACH**  
Manufacturer Made in USA  
The Anspach Effort, Inc.  
4500 Riverside Drive  
Palm Beach Gardens, FL 33410, USA  
Tel: (800) 327 6887 / +1 561 627 1080

EC REP  
Synthes GmbH  
Eimattstrasse 3  
4436 Oberdorf  
Switzerland  
Tel. +41 61 965 61 11

Keep Dry Do Not Re-use

STERILE R  
Sterilized using Irradiation Do not use if package is damaged Rx Only

Consult instructions for use

16-3872(D)  
16-3871(D)  
€2797

